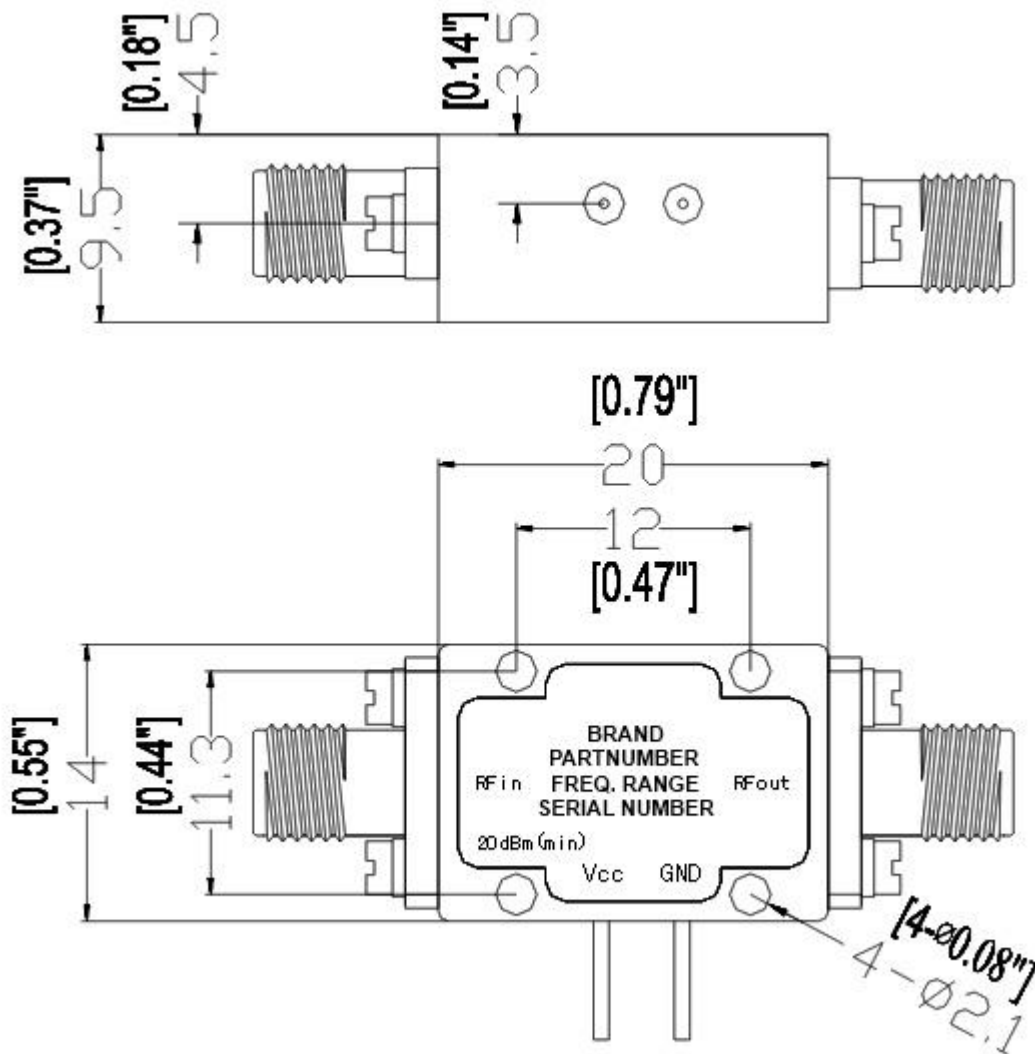


TUNEFUL CORPORATION

RF DIVISION

Voltage Controlled Microwave Phase Shifter– basic outline:



ATTENTION: THIS IS THE BASIC DRAWING, THE OUTLINE MAY VARY DEPENDING ON THE OPTIONS YOU CHOOSE FOR THE PRODUCT, PLEASE, CONSULT THE FACTORY

BASIC CHARACTERISTICS (NORMALLY APPLICABLE TO THE SERIES):

Impedance (Ohms) - 50Ω

Input Connector – SMA type

Output Connector – SMA type

Finishing – Protective paint

Material - Aluminum

Seal - Hermetically Sealed

Environment specifications:

Operational Temperature (C°) - -55 ~ +85

Storage Temperature (C°) -55 ~ +125

Altitude - 30,000 ft (In controlled environment)

Vibration - 25g rms (15 degree 2KHz)

Humidity - 100% RH at 35 C°, 95%RH at 40 C°

Shock - 20G for 11msc