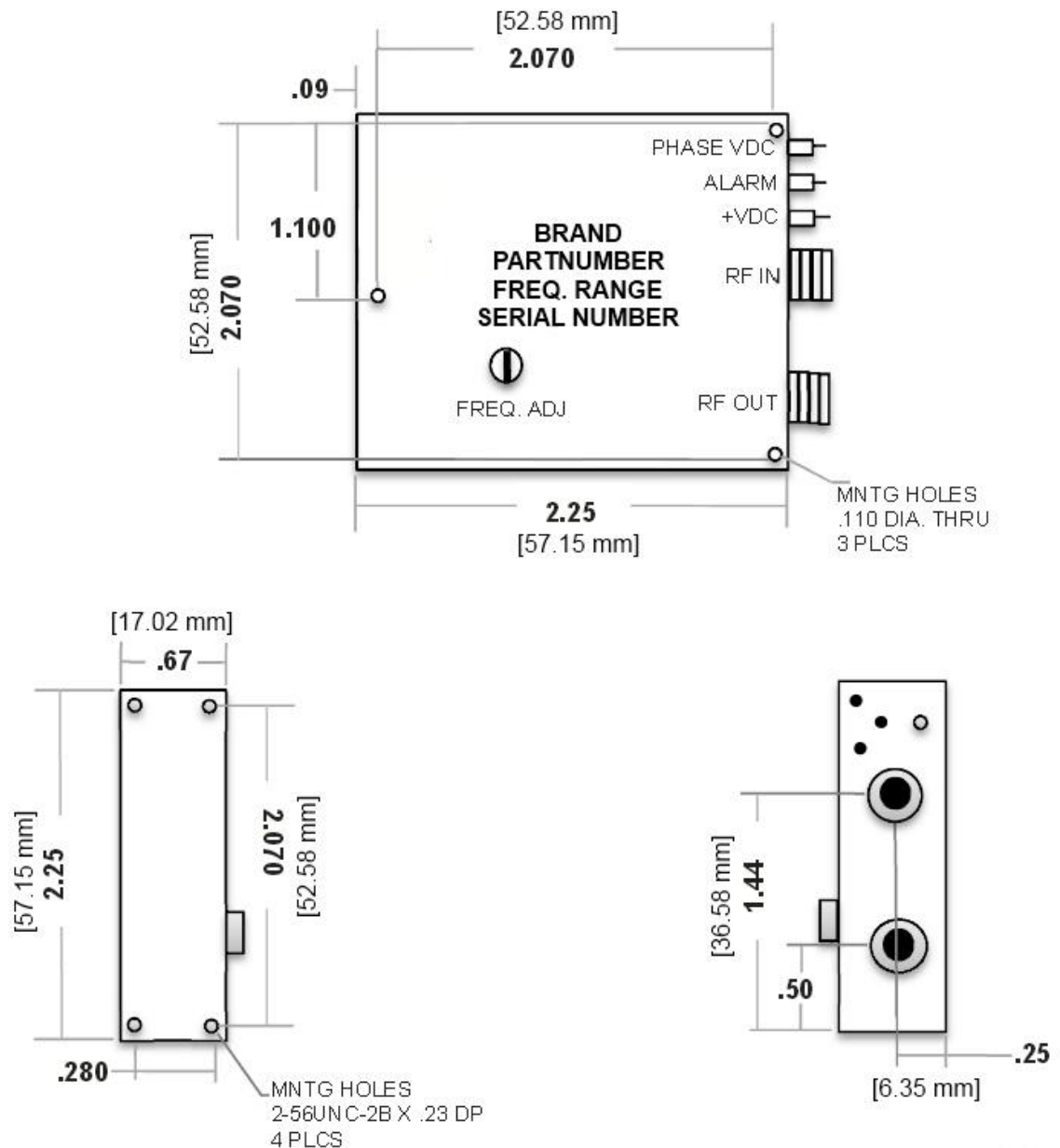


TUNEFUL CORPORATION

RF DIVISION

Phase Locked Dielectric Resonator Oscillator (PLDRO) up to 50 GHz–
basic outline:



ATTENTION: THIS IS THE BASIC DRAWING, THE OUTLINE MAY VARY
DEPENDING ON THE OPTIONS YOU CHOOSE FOR THE PRODUCT, PLEASE,
CONSULT THE FACTORY

#6504, SHASAN ROAD, SHAJING TOWN, BADAN DISTRICT, SHENZHEN, CHINA
518104

BASIC CHARACTERISTICS (NORMALLY APPLICABLE TO THE SERIES):

Input Connector – SMA-Female type or 2.92 (K) type

Output Connector – SMA-Female type or 2.92 (K) type

Finishing – Nickel

Seal - Hermetically Sealed

Specifications:

Operational Temperature (C°) – option

Storage Temperature (C°) - -55 ~ +125

Frequency: from 1.0 GHz to 50 GHz

Output Power - from +13 dBm to +25 dBm

Maximum VSWR - 2

Power Supply Requirements - +12, +15 VDC, 220 mA

Input Reference Frequency - 50 - 200 MHz

Power Reference Input Range - -6 to +10 dBm (Nominal +/- 6 dBm)

Phase Noise - Reference Noise + 20 log(N) + 3dB

Spurious - -80 dBc

Harmonics - -25 dBc

Phase lock indicator alarm - TTL